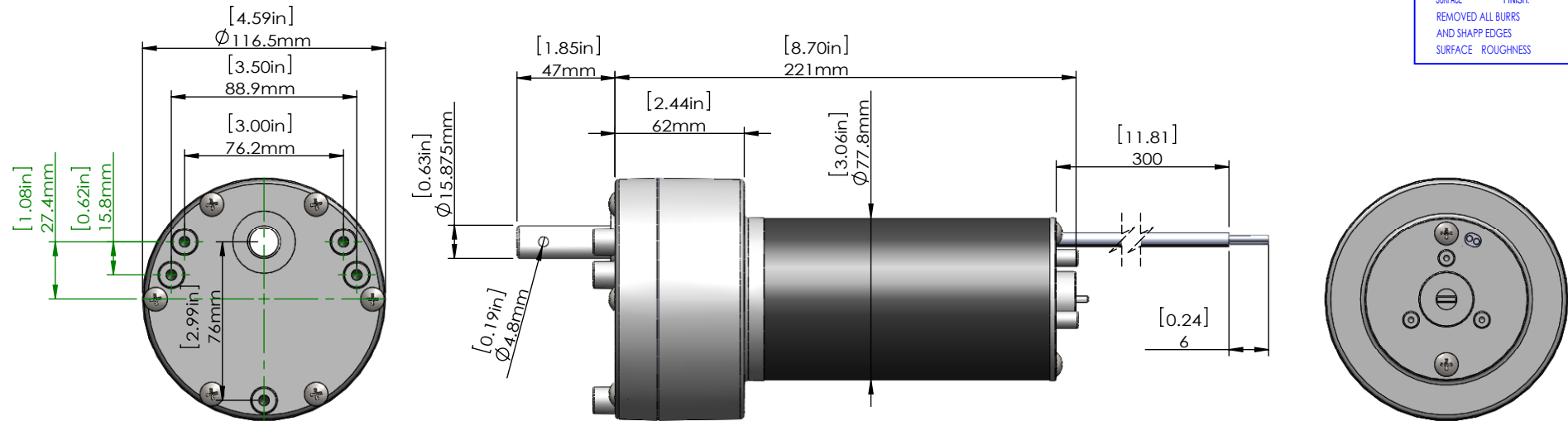


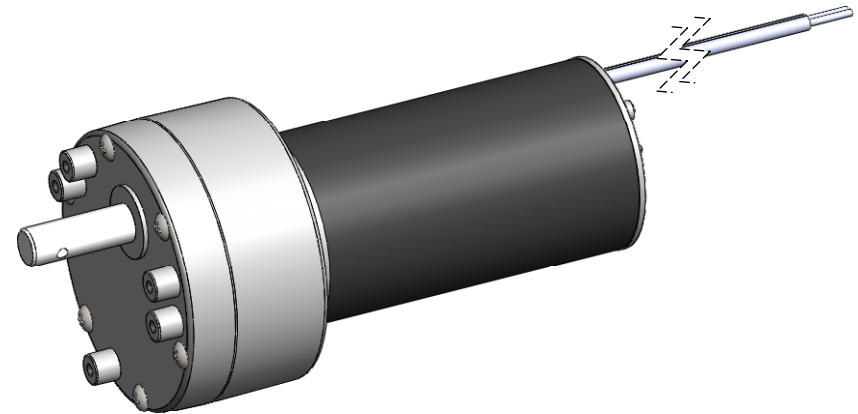
UNLESS OTHERWISE SPECIFIED  
 DIMENSIONS ARE IN INCHES  
 SURFACE FINISH:  
 REMOVED ALL BURRS  
 AND SHAPP EDGES  
 SURFACE ROUGHNESS

25



**Specification:**

- 1.Voltage:DC12 V
- 2.At No-load(motor/ccw, ):  
 Speed:1800±250RPM Current:1.8A down
- 3.At On-load:
- 4.Out shaft speed:1800±250/59.4(i)=30±4.2RPM
- 5.Don't lock motor rotor
- 6.Direction of rotation: CW  
 When viewing gearbox outshaft side with positive voltage applied to red lead wire
- 7.Lead wire:14AWG,UL&CSA Approved
- 8.Start Voltage: 6V down(25°C)
- 9.High pot Test: 1000V/5mA/1s
- 10.Noise(enviroment noise 55dB below,75mm distance)



CONFIDENTIAL AND PROPRIETARY										PART NO.									
THIS IS THE PROPERTY OF ADACEL, IT MUST NOT BE TRADED OR REPRODUCED IN ANY MANNER. NOR SHALL IT BE SUBMITTED TO OUTSIDE PARTIES FOR EXAMINATION WITHOUT OUR CONSENT. IT SHALL BE USED AS A MEANS OF REFERENCE TO DO WORK DESIGNED OR FURNISHED BY US.										WEIGHT		9		REV.					
										PART NAME		PID1232 MOTOR		QUANTITY		1		SHEET 1 OF 1	
										SCALE		1:10		DRAWING SYMBOL		<small>UNLESS OTHERWISE SPECIFIED</small> <small>TOLERANCES</small> LINEAR 0-2 ±0.2 2-5 ±0.5 5-12 ±0.75 ANGULAR >12 ±1			
										DESIGN		Q A		CHECK		APPV D		DATE	